

Learn to weave on the Rigid Heddle Loom



ashford
WHEELS & LOOMS

spinning | weaving | carding | felting | knitting | dyeing

Welcome to the wonderful world of weaving ...

YOUR FIRST PROJECT – A SCARF

You will need:

- A pair of sharp scissors
- A measuring tape
- Cardboard warp sticks
- One long table or two smaller tables

Yarn

For this project we have used Ashford DK yarn, a smooth double knit sport weight yarn with a slightly textured handspun look, for the warp and the weft.

Ashford DK yarn (100% wool, 202m/221yds, 100gm net)
#100 Pure White, #430 Indigo, #425 Denim, #140 Pewter.

Warp

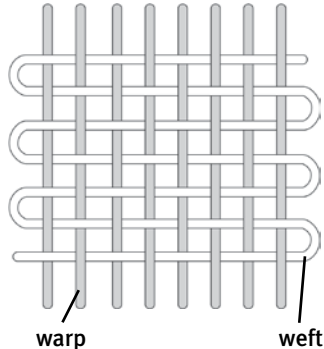
Use Ashford DK in stripes of blue, silver and white.
Length – 2m (79ins) allowing 23cm (9ins) at each end for fringe
Number of ends – 84
Finished width – 28cm (11ins)

Weft

Ashford DK #100 Pure White.

WARP AND WEFT

These are two terms you will need to know as they form the basis of all weaving. The **warp** threads are put onto the loom first. They are held on the loom under tension between the front and back roller. The **weft** threads pass over and under the warp threads to form the woven fabric.



SHED

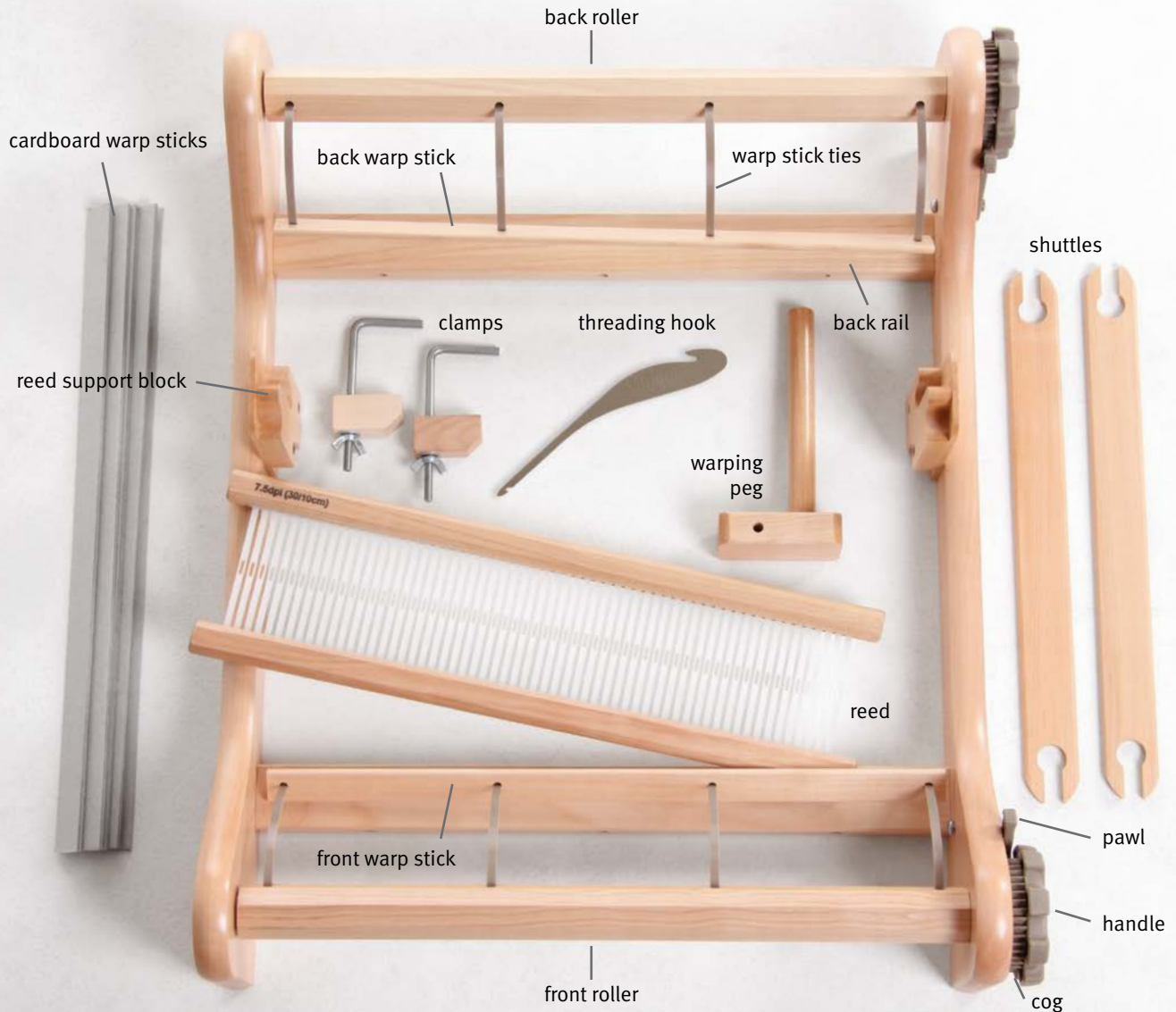
The shed is the opening formed in the warp, through which the shuttle passes.

OPTIONAL ACCESSORIES

Extra reeds 10, 20, 30, 40, 50 and 60 dents per 10cm (2.5, 5, 7.5, 10, 12.5 and 15 dents per inch), vari dent reed, freedom roller, table stand, loom stand, warping pegs for indirect warping option, pickup sticks, shuttles, weaving needles, tapestry beater, warp thread weights, fringe twister.



Rigid heddle loom and loom stand

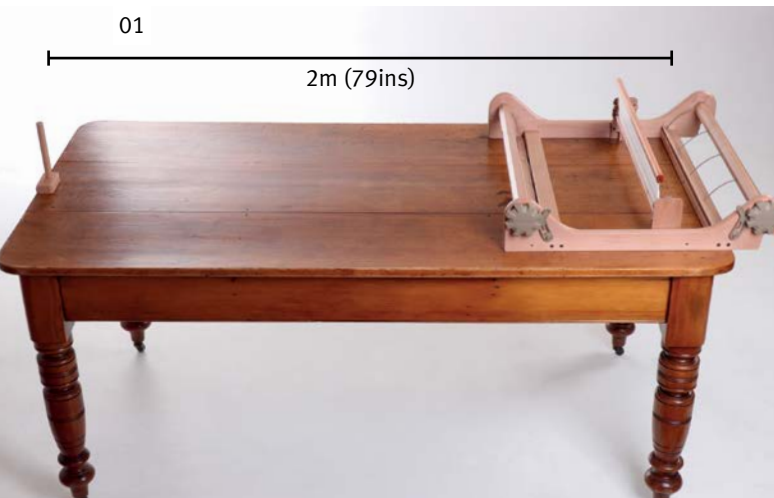


THE LOOM

The reed has eyes and slots that the warp threads pass through to create the weaving shed. The reed is also used as a beater to push the rows of weaving into place. This reed spaces the threads at 30 threads to each 10cm section of reed or 7.5 threads to 1 inch.

The reed can also be called a heddle. The shuttle is used to carry the weft yarn from side to side through the shed to make the fabric.

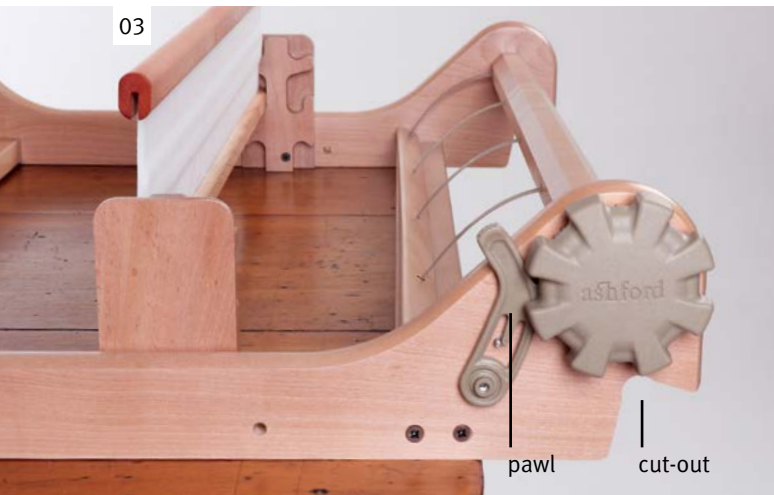
The warping tools, a warping peg, a threading hook and 2 clamps, are used to warp the loom.



Use a long table or set two tables in place until the warping peg is 2m (79ins) from the back warp stick on the loom.



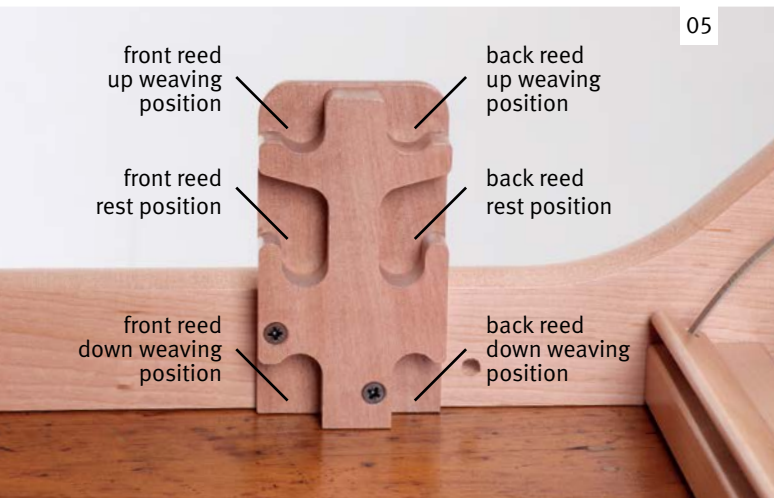
Clamp the back rail of the loom to a table. Insert the clamp into the centre hole on the back rail.



Note: The back of the loom has the cut-out piece in the lower edge. Put the front and back brakes on by engaging the front and back pawls into the teeth in the cogs.



Clamp the warping peg to the other end of the table.
Note: If the table top is not deep enough, place the end of the clamp over the warping block.



Use the front set of weaving positions when using one reed. When using two reeds for weaving double width, double layer and patterns use the front and the back set of weaving positions.*
Note: The three positions on the reed support block are up, down and rest.



There are 84 warp ends in this scarf. That is 42 double threads that first go through the slots in the reed. See the guide below to locate your first slot. Tie the warp yarn to the back warp stick behind the first slot.



Guide:
 40cm (16ins) loom - Start 9 slots from one the end.
 60cm (24ins) loom - Start 24 slots from one the end.
 80cm (32ins) loom - Start 39 slots from one the end.

Put the threading hook through the first slot. Catch the yarn with the hook and pull a loop through the slot.

*For more information on using two reeds to weave double width, double layer and patterns visit our website:
www.ashford.co.nz/doubleheddle



Take the yarn to the warping peg and loop it over.
Sit the ball of yarn on the floor behind the loom.

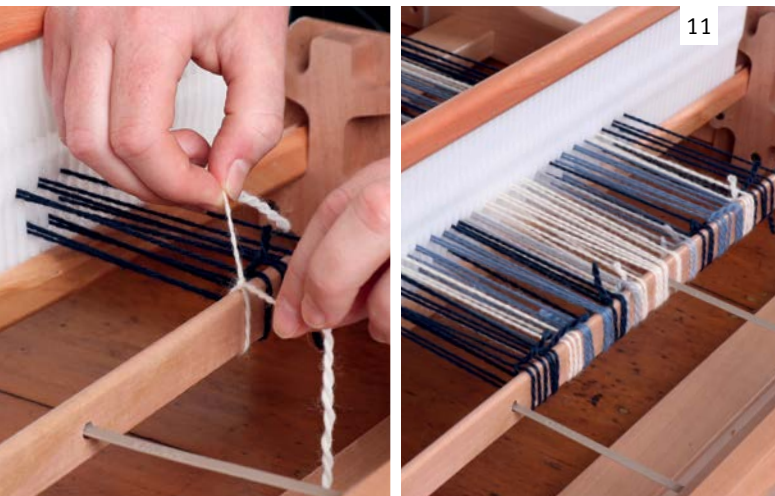
Hint: Sit the ball of yarn in a bowl so it doesn't roll around on the floor.



Put the threading hook through the next slot. Take the yarn UNDER the back warp stick, catch the yarn on the hook and pull a loop through the slot. Place this loop over the warping peg in the same way as the first loop. Try and keep the tension even along the length of the warp.



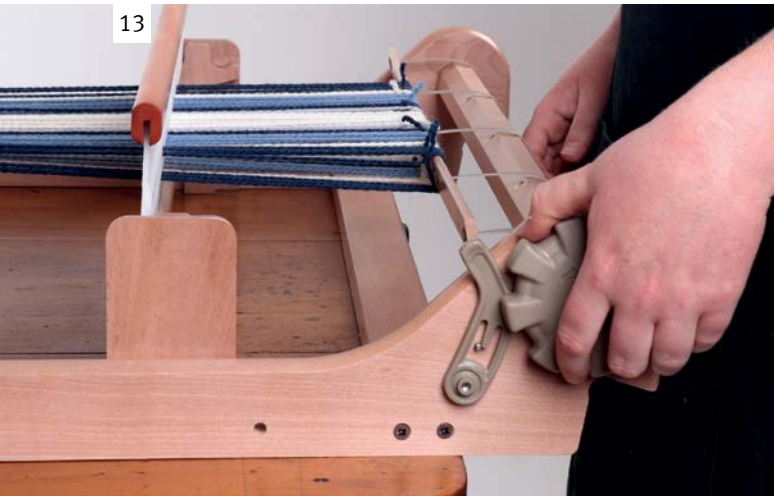
Go to the next slot. Take the yarn OVER the back stick, through the slot and over the warping peg. Continue this way, one yarn thread under, one thread over the back warp stick until you have 42 double threads through the slots (84 ends).



To change colours: Cut and tie off one colour to the back warp stick. Tie on the new colour to the back warp stick. Pull the new thread through the next slot and loop over the warping peg. Continue with steps 09 and 10 until the next yarn colour. Finish by tying the last thread to the back warp stick.



Ask a friend to hold the warp ends for you and move forward as you wind the warp onto the loom.
Note: If you are by yourself, refer to the Solo Warping Instructions on our website www.ashford.co.nz/solo



13

Stand at the back of the loom. Wind the back handle towards you until the back warp stick goes around the roller once.



14

Insert a cardboard warp stick or piece of paper the full width of the back roller,



15

The cardboard warp sticks or paper separate the yarns and keeps the tension even. Add more cardboard warp sticks or paper as you wind on the warp.



16

Stop when the end of the warp reaches the front roller. Cut through all the yarn loops. Do not wind any further. Unclamp the loom for threading.



17

Take one thread from the first slot. Using the threading hook, pull this thread through the eye to the right of the slot. The other thread stays in the slot. (Picture from back of the reed)

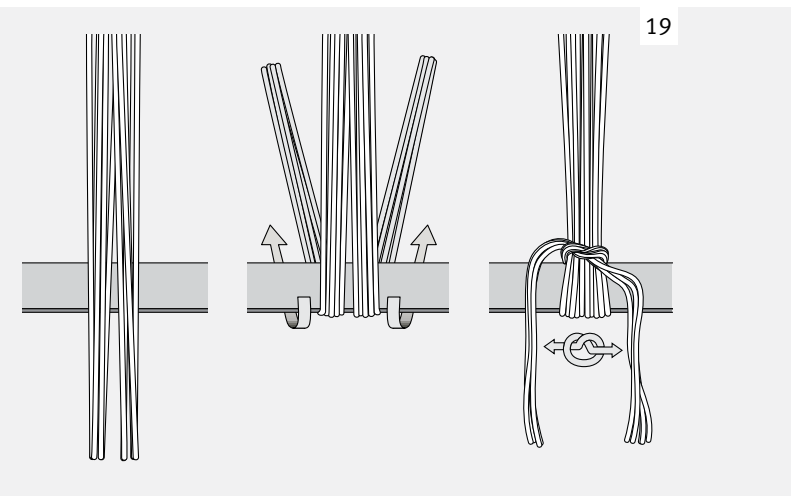


18

Continue across all slots. Now threads are in both eyes and slots. (Picture from front of the reed)



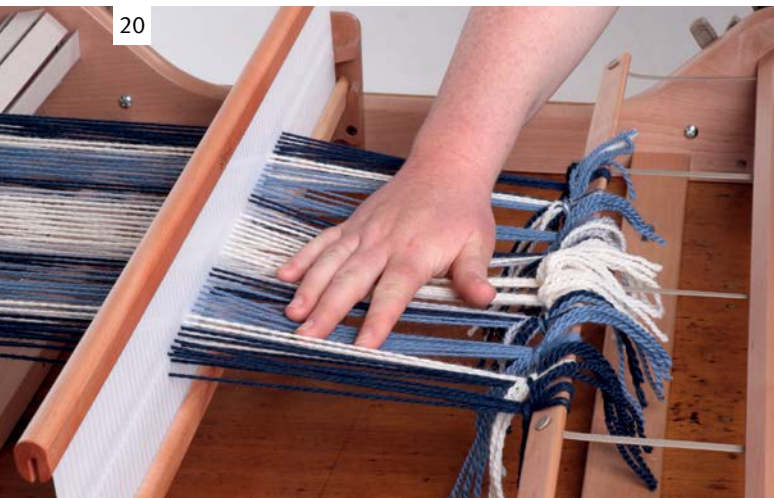
Divide the threads into small groups. Take a group of threads over and around the front warp stick. Divide it in two. Tie around the top of the group in a flat SINGLE knot. Tie the width of the warp in the same way.



19



FOR AN ALTERNATIVE TIE-ON METHOD see our YouTube tutorial “Tying a warp on a Rigid Heddle Loom” <https://youtu.be/bnrCoiJfZVY>



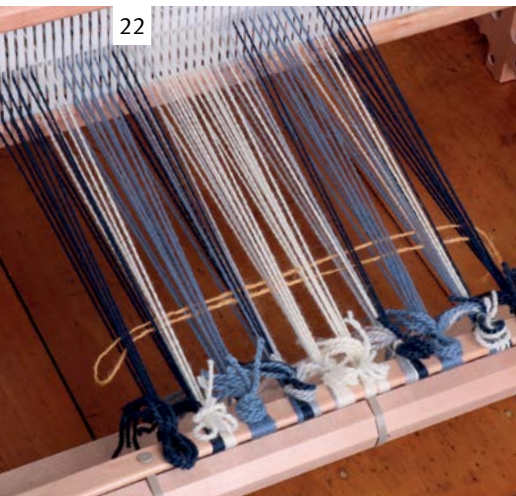
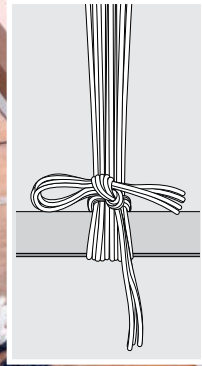
20

Check the tension. Adjust the knots until all groups are the same tension. Note: To adjust a knot simply hold the threads on both sides of the knot and gently pull upwards towards the reed, then retighten.



21

Tie the second half of the knots using a half bow tie to secure. You want to be able to undo these knots easily when your weaving is finished.



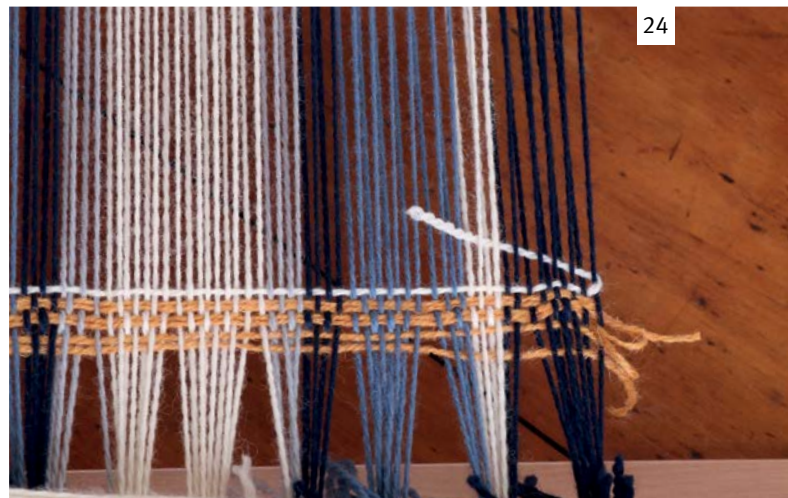
22



Before weaving, you need to close the spaces the knots have created, this is called spreading the warp. Watch on YouTube <https://youtu.be/A-SW47MtrsQ>. Advance the warp to the front roller, release the tension on the warp by turning the back handle away slightly and pull the pawl out of the cog. Keeping tension on the back handle, wind the front handle towards you until the front warp stick reaches the front roller. Click the **back** pawl down and retension the warp. Place the reed in the up weaving position. Insert a loop of scrap yarn, from the right side of the warp, into the shed. **DO NOT** beat, change the reed to the down weaving position. Insert a second loop into the shed (ensure the end of the scrap yarn remains on the right side of the warp to allow easy removal). Repeat again in the up position. Now use the reed to gently push the scrap yarn towards the knots, until the scrap yarn is compressed. The warp threads will now be evenly spread.



Now you are ready to weave. Wind the weft yarn onto the shuttle. Put the reed into the down weaving position. Pass the shuttle through the shed. Use the reed to gently push the first row of weaving down to the scrap yarn.



Put the reed into the up weaving position. Use your fingers to place the end thread into the shed. Pass the shuttle through the up shed. Use the reed to gently push the second row into place.



Hint: To avoid drawing in the sides of your weaving, allow enough weft yarn on each row by passing the shuttle through the shed, pinch the weft thread in line with the outside warp thread and lay the weft in the shed at a 30 degree angle. Gently push the weft into place with the reed. **NOTE: BEAT GENTLY! THERE MUST BE A SMALL SPACE BETWEEN THE ROWS.**



Continue weaving as per the last 2 rows until your work is approx. 8cm (3ins) from the reed. Now you need to advance the warp (winding the weaving on to the front roller). **PLACE THE REED INTO THE REST POSITION.**

27



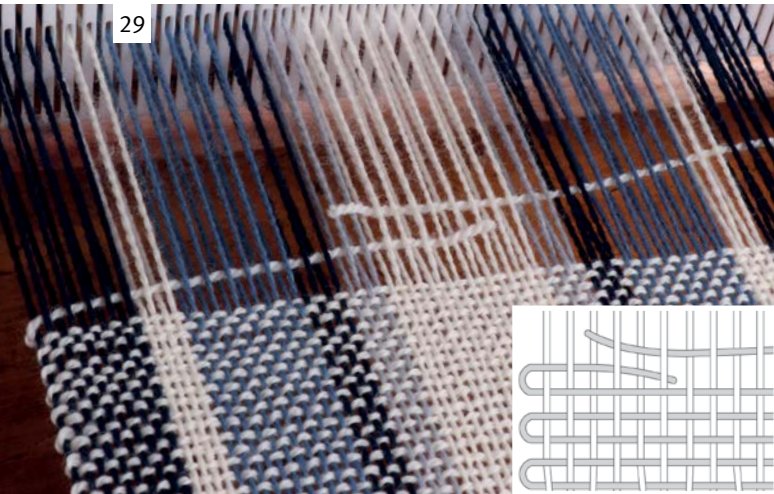
To release the tension on the warp, turn the back handle away slightly and pull the pawl out of the cog. Turn the handle towards the front of the loom so some of the warp unwinds, replace the pawl into the cog to stop it advancing too much.

28



Now wind the front handle towards you until your work is approx. 5cm (2ins) from the roller. Check your tension. As you weave continue winding your work onto the front roller in this way. *Hint: Add a piece of cardboard to cover the knots as you wind your weaving onto the front roller.*

29



Joining in a new thread: At some stage the yarn on the shuttle will finish. Wind some more yarn onto the shuttle. Overlap the new yarn across the old yarn into the same shed. Beat both yarns down together. You can trim the ends sticking out after you finish.

30



Continue weaving until the end. Cut the warp yarns along the back warp stick. Take care not to cut the warp stick ties.



31

Release the front pawl and unwind the weaving from the front roller.



32

Undo the knots on the front warp stick and remove the work from the loom.



33

Tie the ends in groups of four. Use overhand knots. Darn the weft thread into your work using a wool needle or add the thread into the fringe. Alternatively, you can use a fringe twister for the ends. See the back page for more information.



34

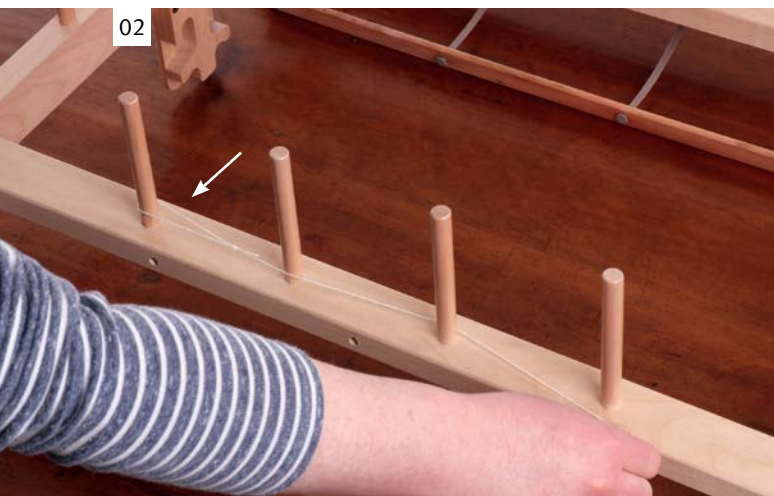
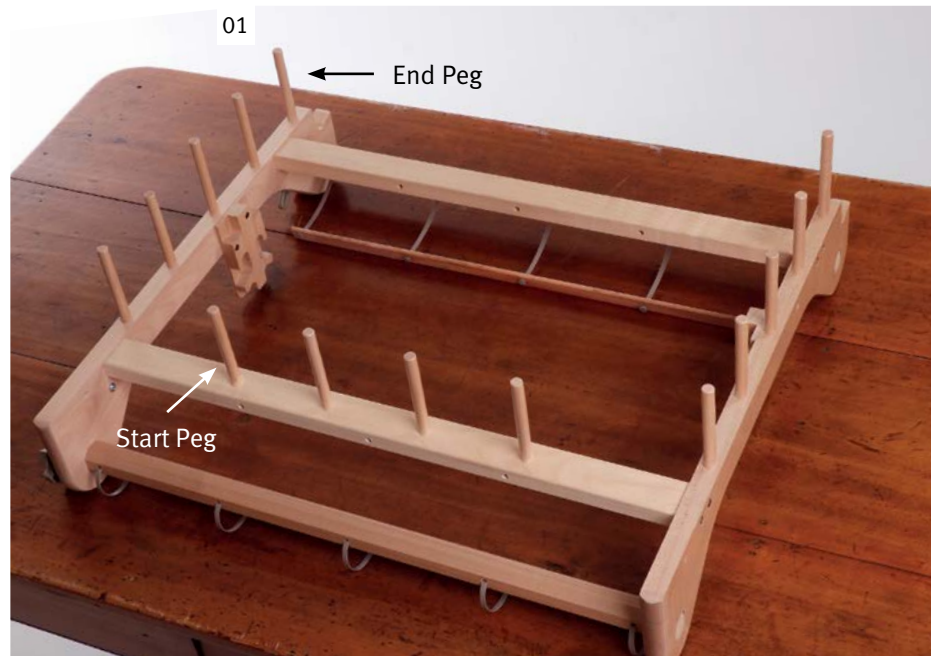
Weaving straight off the loom. Weaving after washing.

The woven work should be washed so the threads open up, bloom and fill the spaces to give the fabric a 'finished' look. See the back page for further washing instructions.

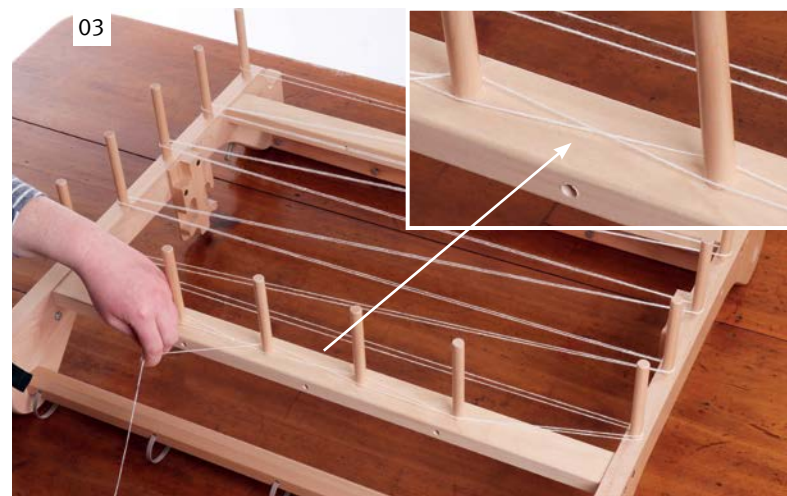
ALTERNATIVE WARPING TECHNIQUE

By using the optional Rigid Heddle Warping Pegs with your loom you can use the indirect warping method. Some benefits of indirect warping are the flexibility to use one thread of one colour, it saves space, ensures even warp lengths and better tension control.

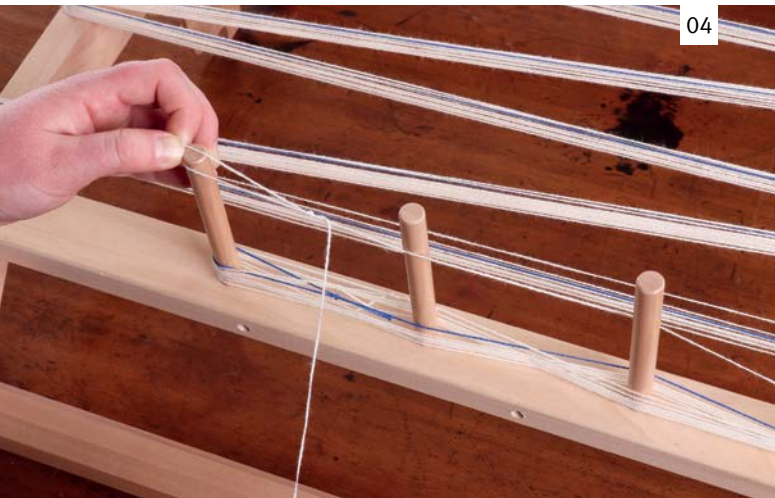
Calculate the length of your warp. Cut a piece of scrap yarn the correct length and use as a guide.



Tie the warp yarn to the start peg with a loop. Wind around the pegs for the required warp length and return following the same path back to the beginning.



When returning back to the start you will be creating a threading cross between the second to last peg spacing. Create this cross by passing the thread up or down in the opposite direction to the previous thread. The threading cross keeps the yarn in the correct order for threading.



04

When finishing a colour, tie off at the start peg the same way as at the beginning.



05

If there is just one thread of one colour needed in the design, tie the yarn off at the end peg in the same way as the start. Then begin again from the start peg.



06

When all the yarn has been wound on, add choke ties to the warp to prevent the threads from tangling. Add a long loose tie through each side of the threading cross.
Note: For wide projects wind your warp in two or three separate chains.



07

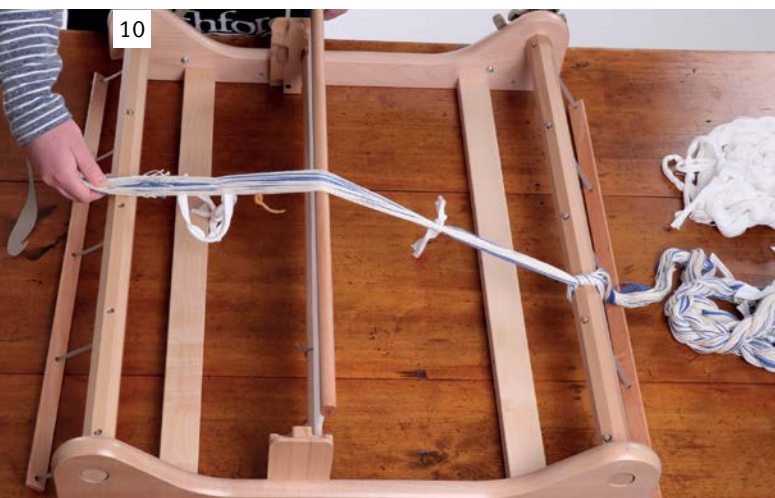
Also add tight choke ties at the start and end pegs and at regular intervals along the warp.



Now it is time to chain the warp from the pegs. To remove the warp begin at the end peg. Take your hand through the middle of the loop. Reach for the warp pulling it back through the loop.



Put your hand through the new loop and continue chaining until you get close to the threading cross.



Tie part of the unchained end to the front roller to keep it in place while threading.



Hold the chain near the threading cross and cut the top loops.



Pick up the threading cross and insert your fingers on either side of the cross. Place the reed in the neutral position. Start threading the reed by taking the outer-most warp thread on the cross and thread it through the reed from the front of the loom to the back. Unlike the direct method you thread slots and eyes (not just slots) sequentially.



Once all the warp yarns are threaded through each slot and eye, tie them to the back warp stick in small bunches. Please see steps 19 - 21 of the Scarf project.



Untie the warp from the front roller. Now it's time to wind the yarn onto the back roller, keep the warp under tension. A friend can help by holding the end of the chain out under tension at the front of the loom.



Insert cardboard warp sticks as you wind, at least one per turn.
Once finished leash on your warp.
See video tutorial on Tying on a warp
<https://youtu.be/bnrCoijfZVY>



Lastly you will need to spread your warp using some scrap yarn. See video tutorial on Spreading the warp <https://youtu.be/A-SW47MtrsQ>



Now you are ready to weave!

FINISHING

The woven work should be washed so the threads open up, bloom and fill the spaces to give the fabric a 'finished' look.

WASHING

Wash the scarf gently in warm water with a little detergent. Push up and down for a minute. Let the soapy water drain away and rinse the scarf in warm, clean water. Hang out to dry. Place the work over a towel so you don't get a fold line on the fabric. While the work is still damp, cover it with a soft cotton cloth and press with a warm iron. Hang again until thoroughly dry. You did it! You can now proudly wear your first handwoven scarf!

HELPFUL HINTS

Beating

Always beat gently. Sometimes the work will look a little open. Remember, the work is under tension on the loom and will come together when taken off. Also, the washing process will close the gaps a little.

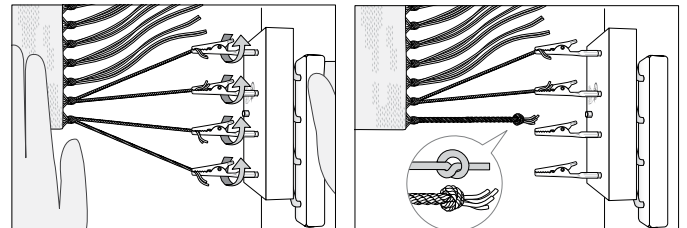
Tension

Do not over-tension your warp. The warp threads only need enough tension applied to hold the reed in the up position. If your reed falls forward when in the up position, increase the tension slightly. If you have difficulty changing the reed to the up or down position, loosen the tension slightly. Over-tensioning the warp will put strain on the yarn, the loom and you!

CREATING A TWISTED FRINGE

To quickly create an attractive evenly-twisted fringe use a Fringe Twister.

See video tutorial on fringe twisting
<https://youtu.be/8b2jL4UgsfA>



Also available from Ashford



The Ashford Book of Rigid Heddle Weaving
By Rowena Hart
ISBN: 978-0-9582881-1-8



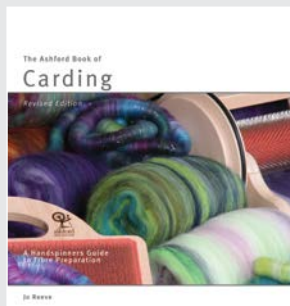
Rigid Heddle Weaving Basics and Beyond
By Deborah Jarchow
ISBN: 978-0-9582881-8-7



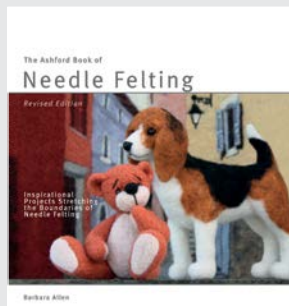
The Ashford Book of Weaving Patterns from Four to Eight Shafts
By Elsa Krogh
ISBN: 978-0-9582881-7-0



The Ashford Book of Hand Spinning
By Jo Reeve
ISBN: 978-0-9582881-5-6



The Ashford Book of Carding - By Jo Reeve
ISBN: 978-0-9582881-9-4



The Ashford Book of Needle Felting
By Barbara Allen
ISBN: 978-0-9582881-2-5



The Wheel Magazine
Ashford's annual fibrecraft magazine. Spinning, weaving, felting, dyeing and knitting projects, patterns and articles from around the world. To receive the premium version delivered to you, subscribe at: www.ashford.co.nz/subscribe



Join us on facebook
www.facebook.com/ashford.wheels.ooms

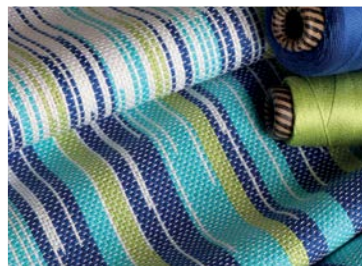


Watch our *how-to* videos on You Tube
www.youtube.com/AshfordHandicrafts



Join us on Instagram
[@ashford_wheels_looms](https://www.instagram.com/ashford_wheels_looms)

For more information, helpful hints and inspiration we recommend The Ashford Book of Rigid Heddle Weaving. Visit our website to view our tutorial videos www.ashford.co.nz



LTWRH VVV4

Ashford Handicrafts Limited
415 West Street, PO Box 474, Ashburton, New Zealand
Ph +64 3 308 9087 sales@ashford.co.nz www.ashford.co.nz

ashford
WHEELS & LOOMS